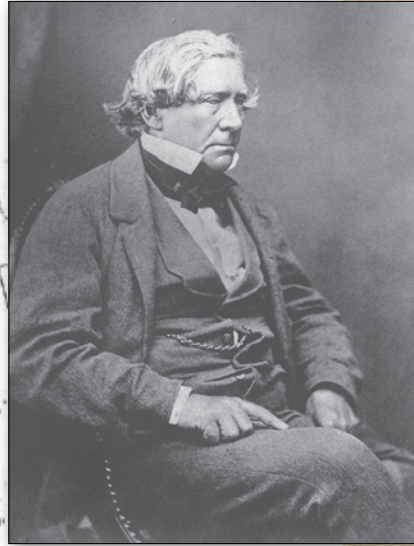
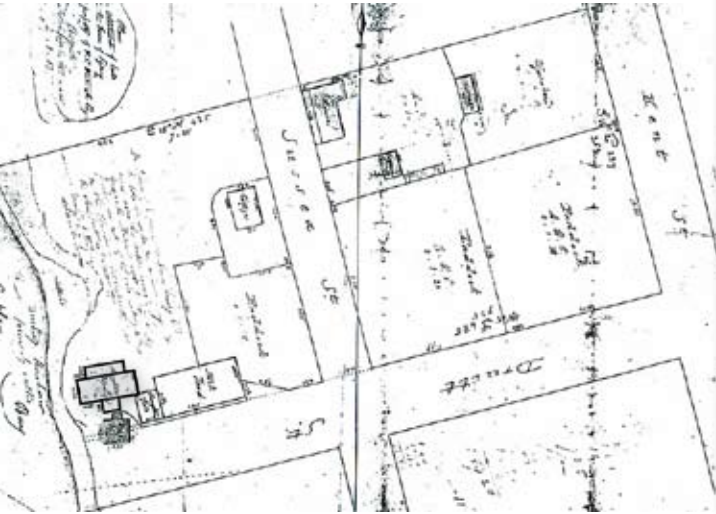
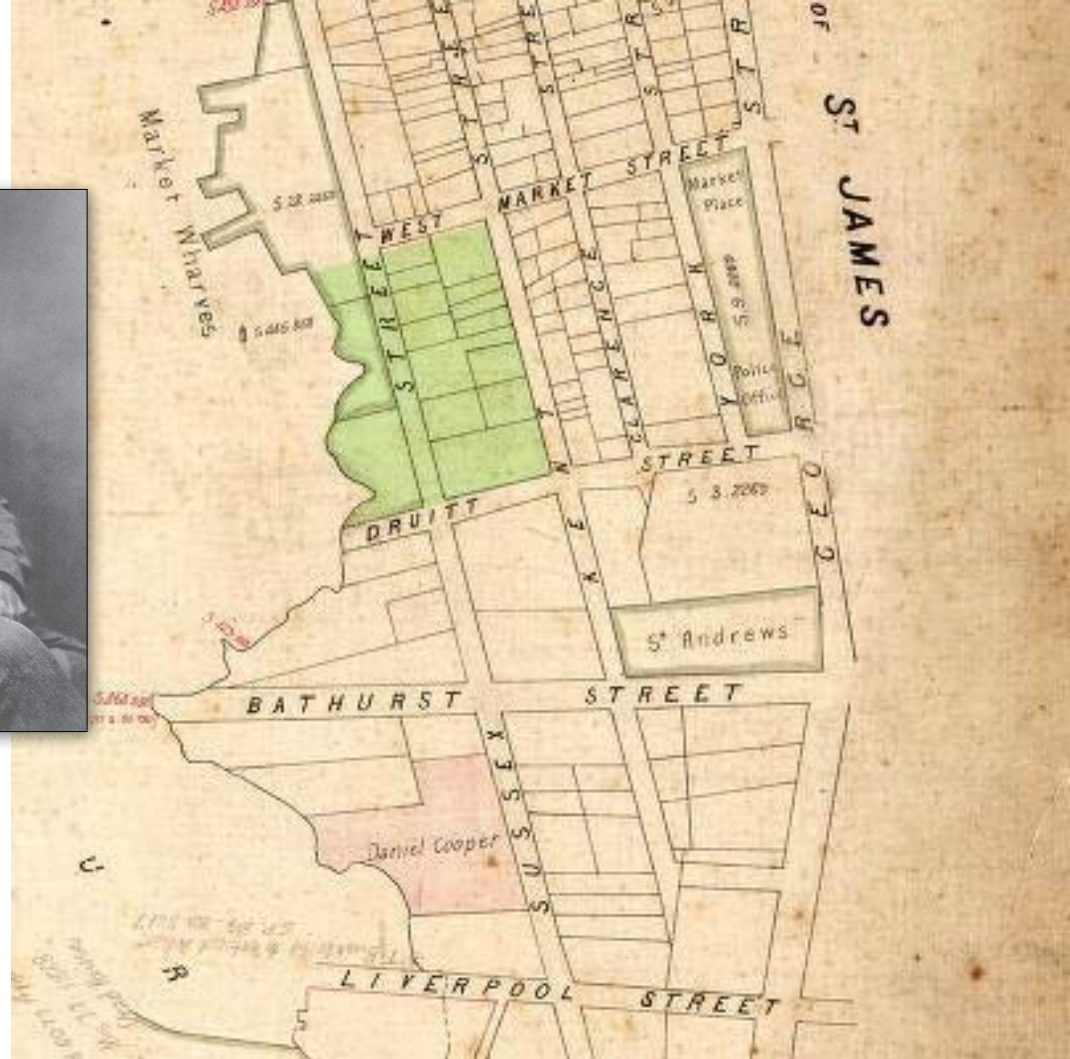


Sydney Paddocks

1830s - 1850s



William Charles Wentworth, explorer, author, barrister, landowner, and statesman, was granted a parcel of land on 2nd December 1836. The allotment stretched from Kent Street to Cockle Bay and between Druff and (West) Market Streets. The site was used as paddocks with a slaughter house located near the shores of Cockle Bay.



Druitt Street Development

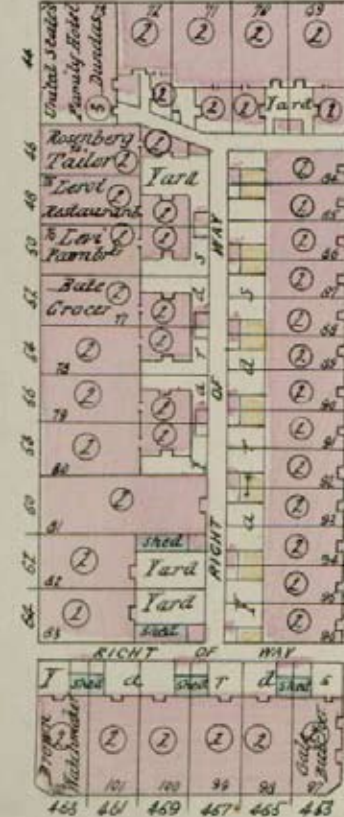
mid-1850s - 1920s



From the mid-1850s to 1920, Druitt Street was a mixture of commercial and residential properties. Businesses included boot maker, baker, printer, glazier and mariner. H Percy Dove's Map of 1882 shows residences alongside a tailor, restaurant, pawn broker and grocer. The United States Family Hotel, Dundas, was at the corner of Sussex and Druitt Streets.

Inset: United States Hotel cnr Sussex and Druitt Streets showing subject site to right, dated c1909-1913

DRUITT



LANE
WENTWORTH

SUSSEX

KENT



Terrace Clearance

1930s



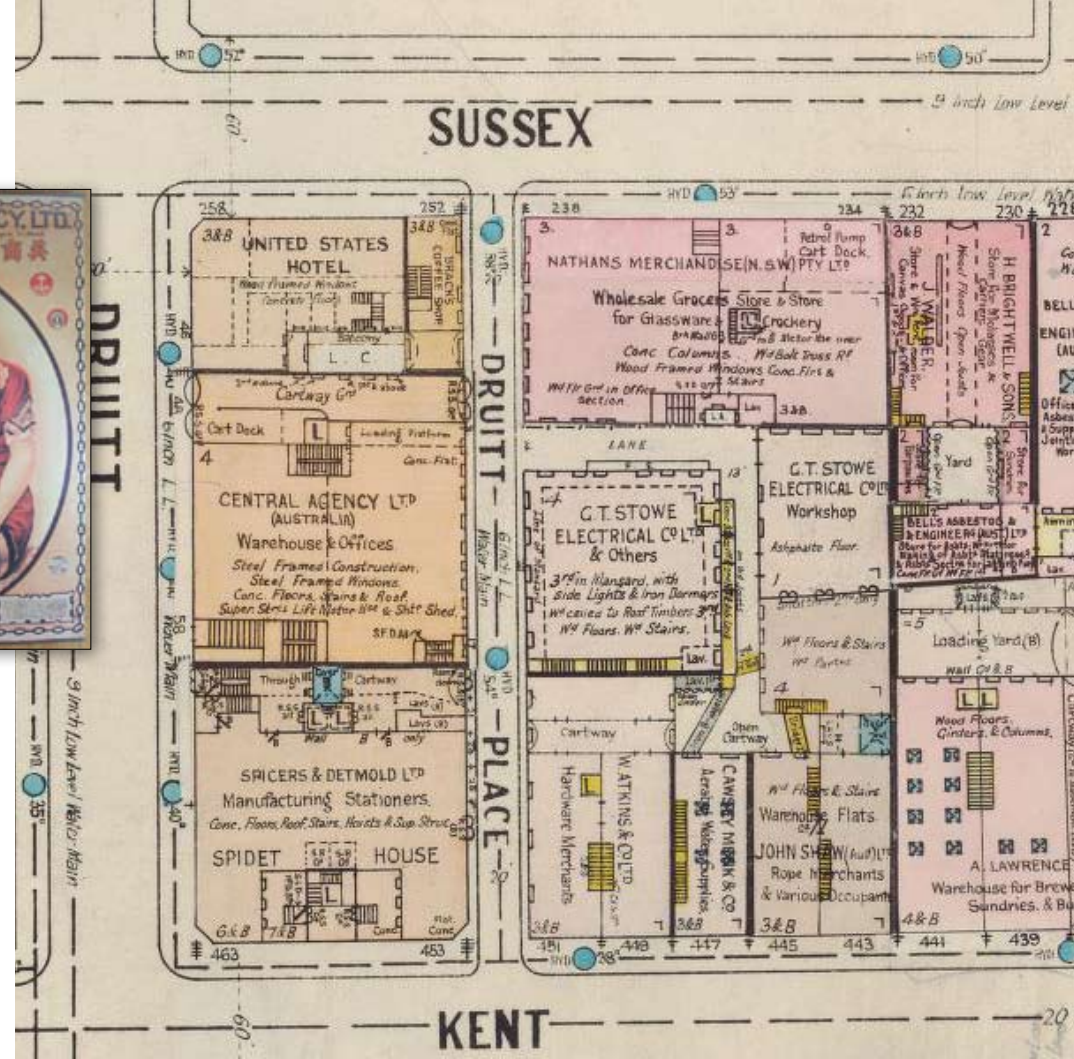
By the 1920s residential and commercial terraces were being hemmed in by commercial development. Terraces fronting Druitt Street and Wentworth Lane (now Druitt Place) were vacated and demolished. The small allotments were amalgamated to construct large warehouses. Close proximity to Sydney's docks and wharves enabled transportation of goods.

Warehouse Development

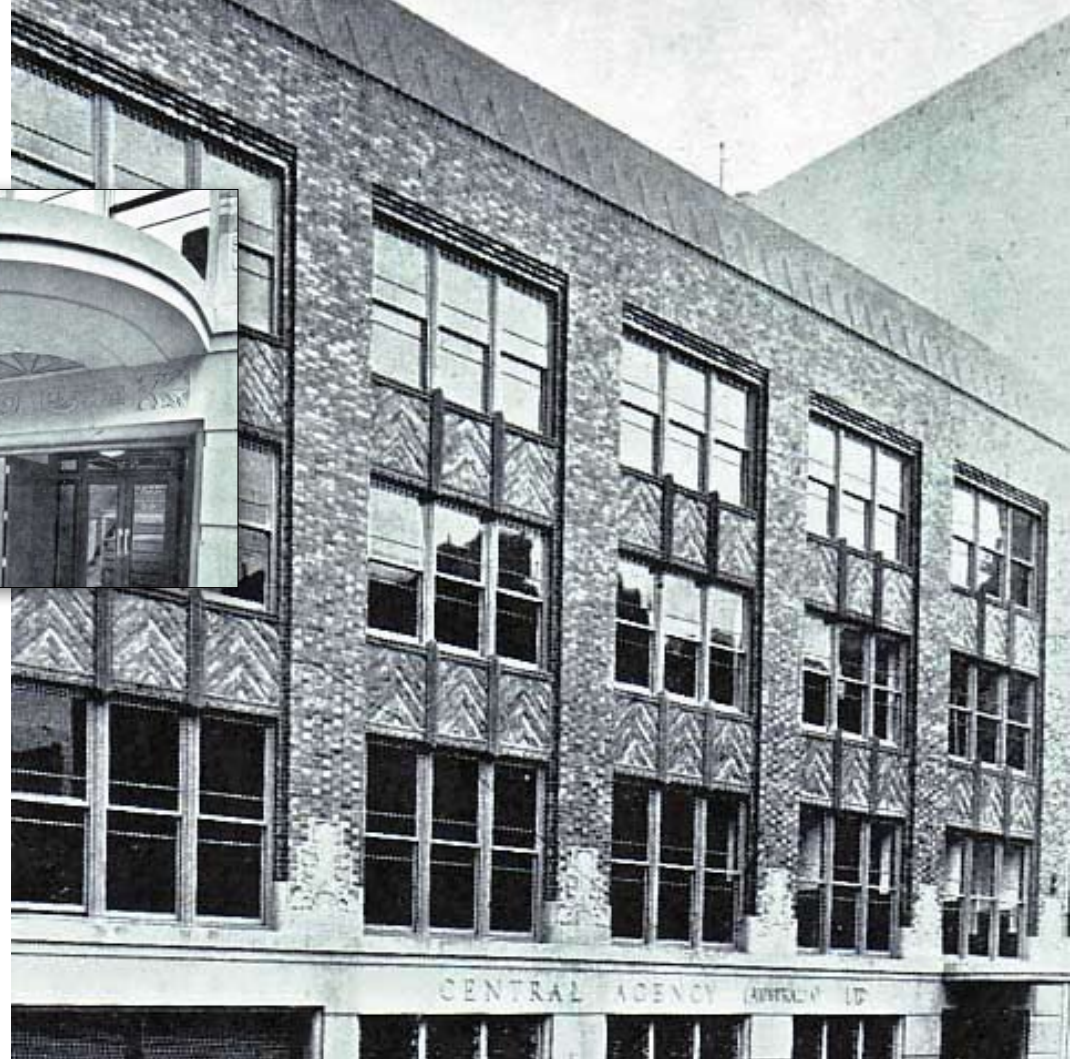
The Central Agency (Australia) Limited



In the second half of the nineteenth century, the thread manufacturing firm, J&P Coats, emerged as the largest in the world. Although based in Paisley, the firm had factories in the USA and was represented worldwide through The Central Agency. In 1935, the international textile trading company, The Central Agency (Australia) Limited, purchased vacant land at 48-58 Druiitt Street to build its Sydney branch.



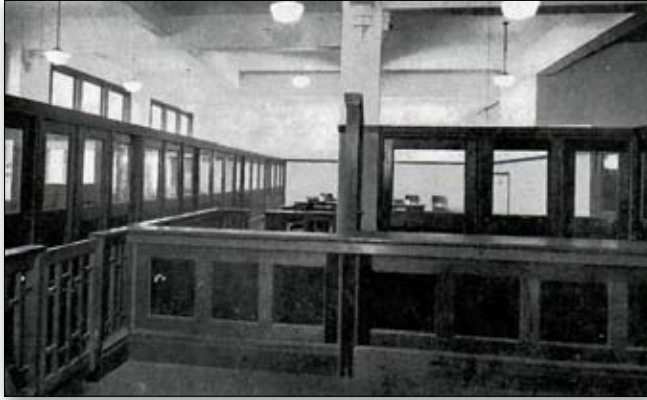
P. William Ritchie, Architect



In 1935, architect P William Ritchie designed Central Agency (Australia) Limited, commercial offices and warehouse, in the Inter-War Art Deco style: “... *instructions were to provide a building pleasing in appearance and of materials that have a life of at least fifty years. The word “longevity” replaced the previously overworked “economy”* [Decoration and Glass, September 1936].

Ritchie also designed RCA House at 499-501 Kent Street, Sydney, a warehouse and film exchange for Universal Film Manufacturing Co. in the Inter-War Stripped Classical Style.

Art Deco Interiors



Art Deco interior finishes and fittings were employed throughout The Central Agency (Australia) Limited building. Original interior finishes included parquet flooring and terrazzo, and cedar office partitions and flushed panelling. *“The general office is approached through another pair of full glass doors. Counters and partitions are of cedar, with glass panels. The design is simple and shows to advantage the natural beauty of this now rare timber...Flush panelled walls are a feature of the manager’s office, and the parquet floor is in keeping”* [Decoration and Glass, September 1936].



TCA - Thread Manufacturing

1935-1965



In 1889, The Central Agency (TCA) was set up in Glasgow (Paisley), Scotland. TCA's initial function was to control the selling of all the goods made by UK thread-producing rivals. On 1 July 1896, members of The Central Agency merged in what amounted to a takeover by J&P Coats. TCA created a formidable organisation designed to maximise profits by controlling costs, eliminating as much competition as possible and controlling and scheduling the production and pricing arrangements for thread across its international chain. Between 1896 and 1960, J&P Coats Ltd became one of Britain's largest and most successful multinational companies and one of the largest suppliers of needlecraft products.

